

# BDO P11D Enterprise

## Version 23.1 Release Notes



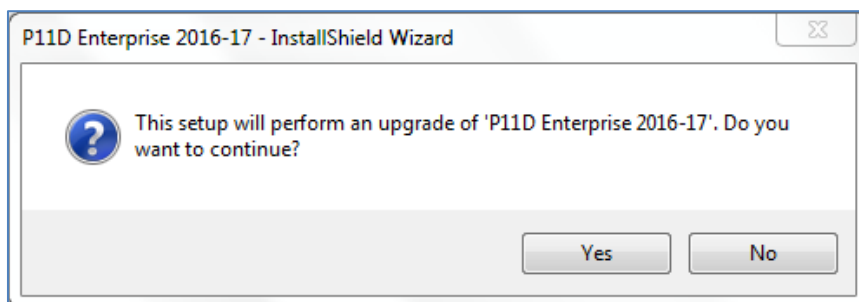
These notes are for existing users of the 2016-17 P11D Enterprise software who are upgrading to the end of year release - version 23.1

Version 23.1 contains the final forms published by HMRC, together with the online submissions updated with amendments HMRC have issued during the year. All forms and returns have been approved by HMRC.

Should you have any queries on any of these changes, or require support, please contact us on Freephone 0808 100 7113 or email [p11d@bdo.co.uk](mailto:p11d@bdo.co.uk)

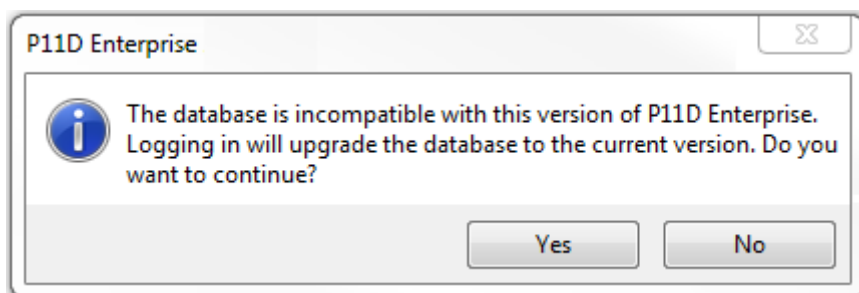
### Upgrading P11D Enterprise 2016-17 Version 23.0 to 23.1

To upgrade from your current version of P11D Enterprise 2015-16 to the latest version, insert the installation CD. If the CD does not start the upgrade automatically, browse to the CD and run Setup.exe. You will then see the following message:



Click on **Yes**. Note that this will NOT delete or remove any data. Once the installation files have been copied, the normal installation prompts appear.

Once installed, launch the P11D application and check that the login page shows the version as v23.1. As you log in you could also see the following message:



This will update your database tables with any changes required for version 23.1. Select **Yes** to continue. All your previous selections and settings will be retained, and there is no need to re-enter your software licence key.

The upgrade must be performed on all users' computers (or terminal servers for those using Citrix).

## **New Installation**

If you have not already installed version 23.0, there is no need to install that first. Instead the Setup routine will prompt you to do a full installation of version 23.1. See the full manual (P11D Enterprise Manual.PDF on the CD or Website) for more information.

## **New Updates/Features**

The software has been updated to reflect all the HMRC changes for 2016/2017 and the following updates and new features have been incorporated into version 23.1

## **Password Protect (P11D/Employee Advice) PDF attachments sent via Email.**

We have added the ability to password protect the P11D and/or Employee Advice PDF's sent via the email facility. You can either select a password of your choice, or use the employee's DOB or NI number. Please note to use the DOB or NI number as the password, you must make sure that these are entered, otherwise the PDF password will not be set.

## **Company Car / Fuel Benefit Changes**

The software has been updated to reflect the changes announced in the latest budget in March 2016. These include:

- The CO<sub>2</sub> emissions bands have all changed for 2016/2017. There is a 7% band for 0g/km to 50g/km (Ultra low carbon cars band), 11% for 51 g/km to 75 g/km, 15% for 76g/km to 94g/km, and from 95g/km the rate is 16% and rises by 1 per cent for every 5g/km to the current maximum of 37% for emissions of 200g/km and above.
- There is still a 3% supplement for most diesel-powered cars. The current maximum of 37% for emissions of 185g/km and above.
- The fuel benefit charge multiplier to calculate the tax payable on the benefit of free fuel for company cars increased from £22,100 to £22,200.

## **Company Vans / Fuel Benefit Changes**

The taxable benefit for company vans made available to an employee by reason of his or her employment that are available for the employee's private use will rise to £3,170. Zero emission vans will be charged at £634.

In addition the annual fuel benefit of £598 will apply where fuel is made available for private mileage.

## **P9D Abolished**

From April 2016 the HMRC have abolished the £8,500 threshold, hence the Form P9D has been withdrawn

## **General Expenses Allowance for Business Travel Abolished**

As from 2016/2017 the General Expenses Allowance have been removed from Section N of the P11D. This is as a result of the significant changes to the requirement of employees to report business expenses reimbursed by their employees, and the abolition of dispensations.

## **Support**

Please remember that support is free! If you have any problems please phone 0808 100 7113, or email [p11d@bdo.co.uk](mailto:p11d@bdo.co.uk). Many of the changes incorporated into our software result from feedback from users. If you have any comments or suggestions, please do not hesitate to call or email us.